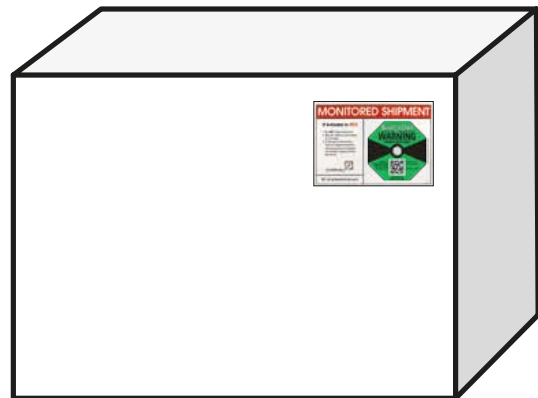


HOW TO USE THE SHOCKDOT INDICATOR

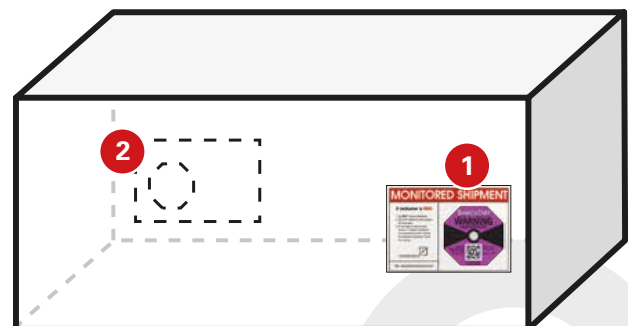


ShockDot Indicator Mounting Instructions

Mount the ShockDot indicator in the lower third of the package/pallet as close to the edge as possible. Avoid the centre of the package because the mounting locations should be structurally sound.



If the package is twice as long as it is wide, use two ShockDot impact indicators. Place a second indicator in the same position on the opposite side of the package.



Place the Alert Sticker on your delivery note as a reminder to receivers to check the ShockDot indicator immediately upon arrival.

While these instructions are considered best practices, each situation may be different.

For more information please email sales@the-imcgroup.com or call +44 (0) 1462 688070.